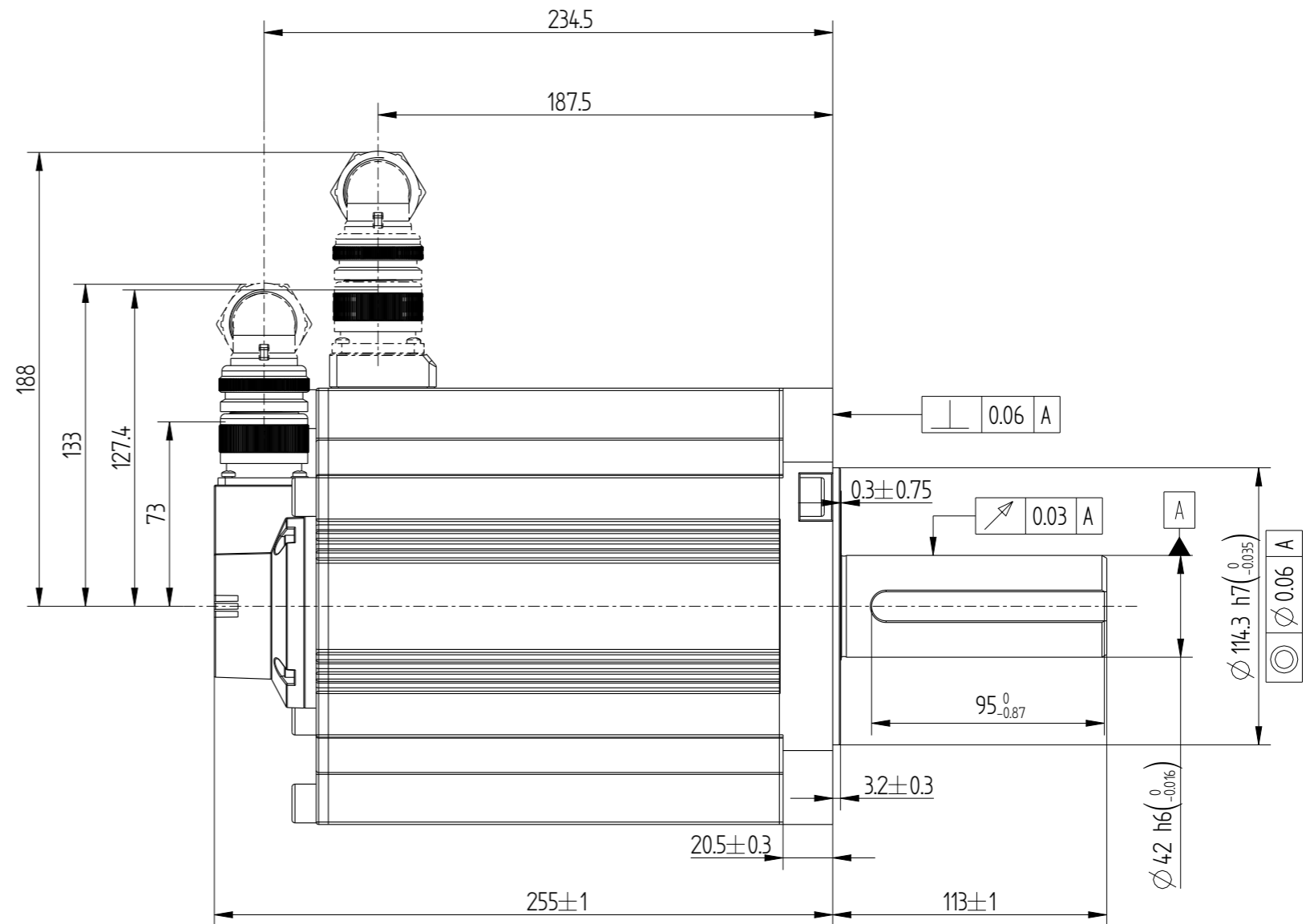
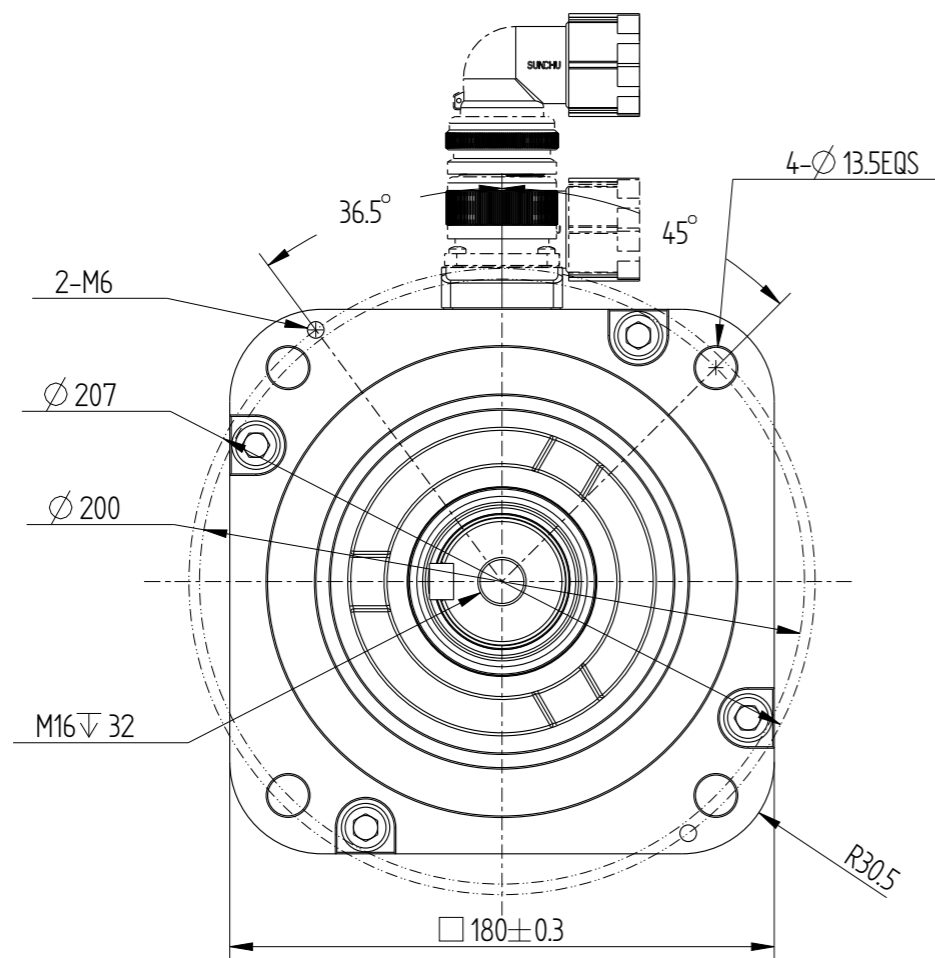
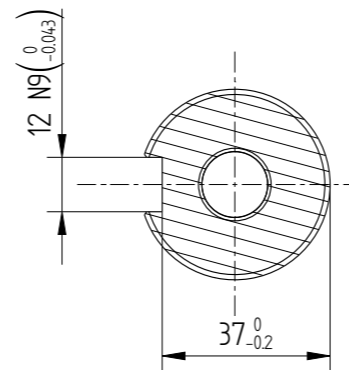
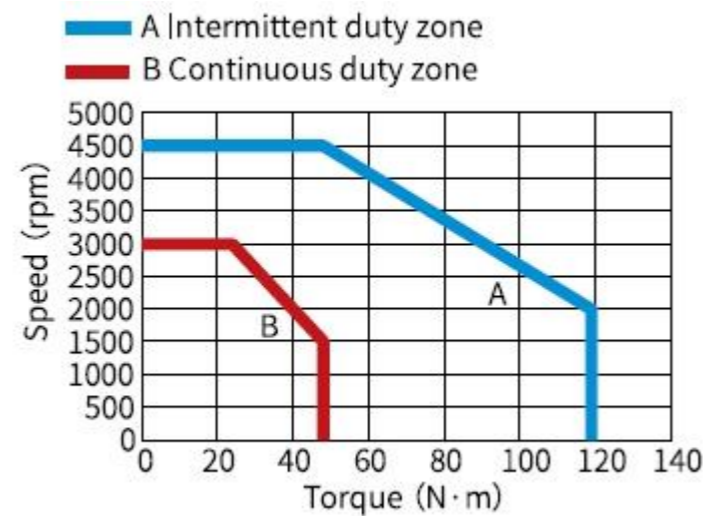


Amendment	Description

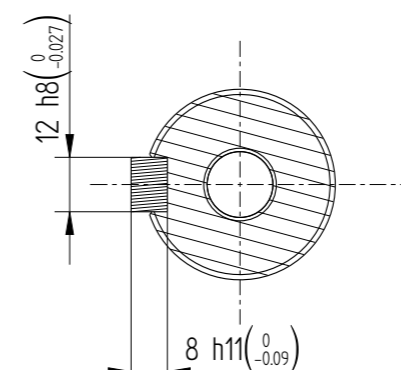
Unit: Millimeter (mm)



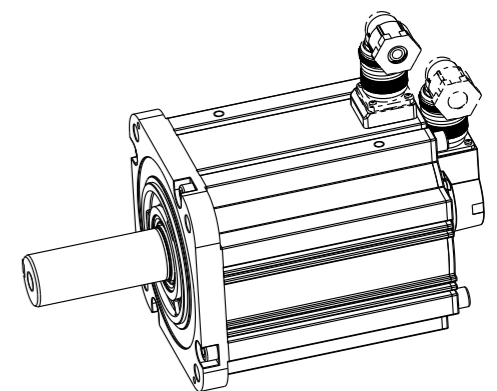
Basic function parameters	
Rated power kW	7.5
Rated voltage V	380
Rated current A	25
Peak current at rated speed A	65
Rated torque Nm	48
Peak torque at rated speed Nm	119
Rated speed rpm	1500
Max speed rpm	4500
Rotor inertia kg \cdot cm ²	127.5 \pm 10%
Encoder resolution	23bit
insulation class	F(155)
Protection level	IP67
Static torque of brake Nm	/
Brake power supply V	/
Brake backlash $^{\circ}$	/
duty cycle	S1
Radial load N	\leq 1764
Axial load N	\leq 588

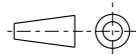


Dimension of shaft end



Dimension of shaft end with key



				Motor Outline Drawing			01118006-WX	
B01	Replace	/	/					
Version	Change method	Change by	Date					
Design	/			/			Mark	 INOVANCE
Check	/							
Craft	/							
Verify	/							
standardization	/			Weight	Scale	Version	Page 1 of 1	
Approve	/			29 kg	25	B01	Model	MS1H3-75C15□-A331R-INT